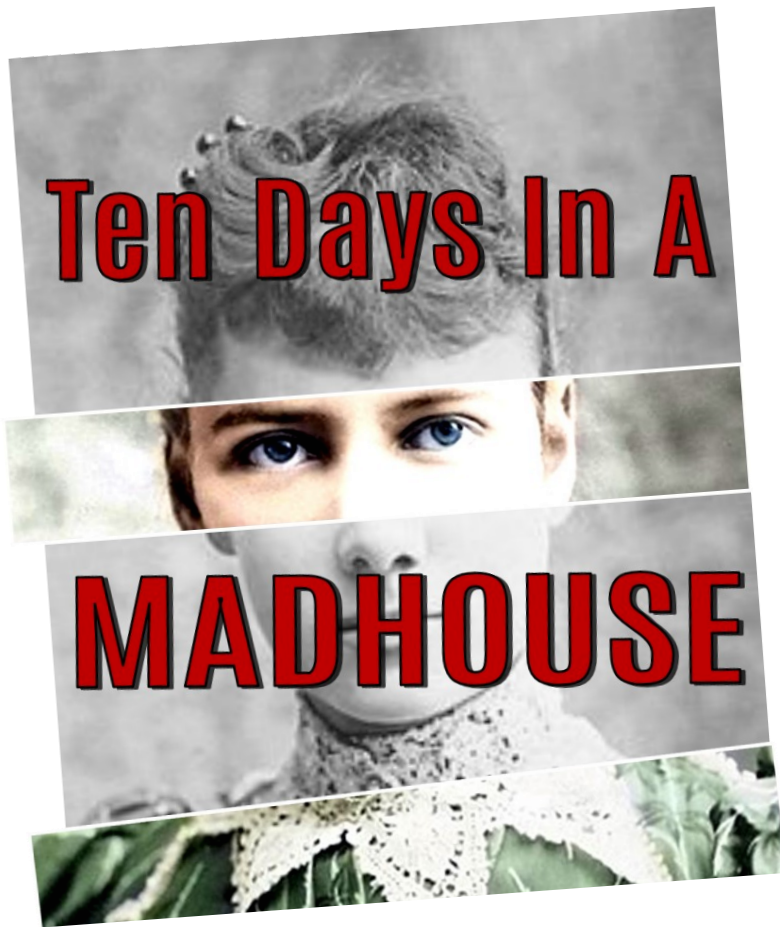




MUSIC THEATRE OF MADISON

and the Wisconsin New Musicals Cycle



THE WORKSHOP PODCAST

Music and Lyrics by
Jennifer Hedstrom

Book and Lyrics by
Karen Saari

Podcast Sound Engineers:
Adam Qutaishat and
Scott Glogovsky

Conceived and directed by
Meghan Randolph

Music Director: Jennifer Hedstrom

Stage Manager: Kristen Emery

Scenic Renderings: Erin Baal

Costume Renderings: Shannon Heibler

Assistant Director: Maureen Janson

Assistant Music Director: Evan Lange

Directing Intern: Trinity Gardner

Spanish translators: Viani Hernandez,
Angela Puerta



ORANGE
TREE
IMPORTS

NAMT
NATIONAL ALLIANCE FOR
MUSICAL THEATRE





CHARACTERS

Nellie Bly: 23, strong and witty, the first female investigative journalist

Anne Neville: 30s, a chambermaid who is stable of mind but whose body and spirit have been overtaxed by a life of hard physical labor, in pain

Tillie Mayard: 20s, a sweet but beaten down and sickly young woman

Sarah Fishbaum : 30s, committed for taking ownership of her body. Funny and sexy, refuses to succumb to misery

Louise Schanz: 14, a young girl whose parents both died tragically. Eager for connection and always missing her family. Often reverts to childlike behavior.

Mrs. Freeman : 40s, an African-American woman rendered mute by tragic loss. Lives in her own world

Mrs. Ramirez: 30s, kind and frustrated woman from Mexico whose “ailment” is not speaking English. Was a dressmaker and still finds ways to create.

Nurse Grupe : 40s, former prostitute and prisoner on the island, works as a nurse. Life has been cruel and she’s happy to return the favor.

Mrs. Caine/Pauline: Mrs. Caine, 40s, kind owner of the boarding house where Nellie feigns insanity/Pauline, 30s, a woman of color, deeply unstable inmate who sometimes responds to music.

Nurse McCarten: 30s, a trained nurse, but overwhelmed and intimidated by life at the asylum

Dr. Field: 20s. A young, inexperienced doctor.

Dr. Ingram : Late 20s. Young, but slightly more educated asylum doctor

George: 20s. A distraught man seeking his wife. Or is he?



Inmates at the asylum

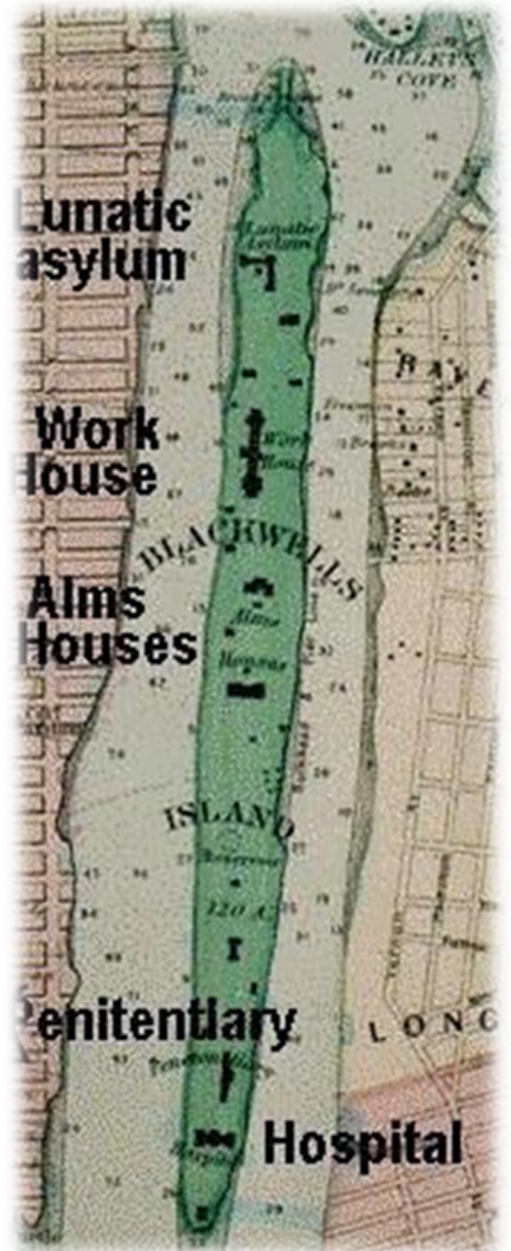


Blackwell's Island Insane Asylum, 1880s

SYNOPSIS

Setting: New York, NY, 1887 and
Blackwell's Island Insane Asylum

- Act One, Scene One: New York City
 Offices of New York World
 Nellie's room
- Act One, Scene Two: Temporary Home for Females,
 Essex Market Courthouse
 Blackwell's Island Insane Asylum
- Act One, Scene Three: A dining hall
 Examination room
 Common room
- Act One, Scene Four: The bath room
- ACT TWO**
- Act Two, Scene One: The yard
- Act Two, Scene Two: Common room
- Act Two, Scene Three: Common room
- Act Two, Scene Four: Laundry room
- Act Two, Scene Five: Common room
- Act Two, Scene Six: Blackwell's Island
 Around New York



Songs

Act I

Song	Characters	Time in podcast (Ep. 3)
Opening	Nellie, Cast	2:50
Within My Eyes	Nellie	6:33
Face to Face with Self	Nellie	14:05
The Bloody Miller	Pauline	22:25
Charity	Nurse Grupe, Nurse McCarten	23:35
Useful and Unseen	Anne	31:27
Dr. Fishbaum	Sarah	40:38
The Examination	Dr. Field, Nurse Grupe, Nellie	45:12
Tillie's Song	Tillie, Women	51:23
Rock-a-bye Baby/Home Sweet Home	Nellie, Tillie, Louise, Anne , Sarah	58:31
Bottom of the River	Inmates, Nurses	103:30
The Story of Me	Nellie	105:15

Act II

Song	Characters	Time in podcast (Ep. 4)
Promenade	Mrs. Freeman, Inmates	3:28
If It's A Sin	Sarah	11:23
Twinkle Twinkle Little Star	Nellie, Louise, Anne, Sarah, Pauline, Tillie	20:58
Paying It Forward	Nurse Grupe	24:37
Ribbons and Skirts	Louise, Mrs. Ramirez	31:08
Too Many Stories	Nellie and Inmates	37:26
Finale	Nellie and Cast	41:07

Cast Bios (Alphabetically)



Ava DeCroix (Louise Schanz) is excited to make her MTM performance debut with *Ten Days in a Madhouse!* She previously worked with the company as a music directing intern for the 2019 production of *Little Miss Sunshine*. Outside of MTM, she has been seen performing and working behind the scenes at many stages in the Madison area, and most recently would have performed the role of Kathy Selden in *Singin' in the Rain* at Middleton High School had the production not been canceled due to COVID-19. She is grateful for the opportunity to be a part of this beautiful project.



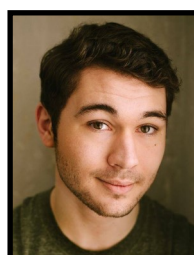
Paige Hutchison Fecteau (Anne Neville) is thrilled to be returning in Music Theatre of Madison's production of *Ten Days in a Madhouse*. Previous MTM credits include Rhoda in *A New Brain*, 35MM, and Beyond the Ingenue. Other favorite past roles include Sandra Bloom in *Big Fish*, Marian in *Music Man*, and Nellie in *South Pacific (St. Bernard Players)* Smitty in *How to Succeed* (Verona Area Community Theatre), Kate in Andrew Lippa's *Wild Party*, and Edwin Drood in *The Mystery of Edwin Drood* (NYU Tisch School of the Arts).



Erica Halverson (Sarah Fishbaum) was last seen in Music Theatre of Madison's *Indecent* playing a very different kind of Sarah. She is very grateful for the opportunity to play complex, intelligent, compelling women. And it is an honor to be the first to speak playwright Karen Saari's words and sing Jennifer Hedstrom's beautiful songs. Erica is a Professor and Chair of the Department of Curriculum & Instruction at UW-Madison where she studies how people learn in and through the arts. Erica is the Mayor of Whoopensocker, a community arts outreach program working with elementary school kids across Dane County to express themselves through writing and performance. Look for Erica's book, "How the Arts Can Save Education," from Teachers College Press in 2021.



Jennifer Kuckuk (Tillie Mayard) is back again for *Ten Days in a Madhouse*, her first show with Music Theatre of Madison. She has worked with many local theater companies including Four Seasons, Middleton Players, St. Bernard Players and Stoughton Village Players, among others. Recent roles include Mary Magdalene in *Jesus Christ Superstar* and Mrs. Phagan in *Parade*. Many thanks to MTM for creating such unique and exciting opportunities for artists and audiences.



George Lorimer (Dr. Ingram) is thrilled to be returning to the Music Theatre of Madison and to the development of *Ten Days In A Madhouse*. He is a Milwaukee based artist, with previous performances with First Stage Children's Theatre, Outskirts Theatre Co., The Ohio Light Opera, and recently appeared as the Male Swing for Music Theatre of Madison's *Indecent*. He is a graduate of the College of Wooster, where he received his BA in Theatre and Music in 2018. @george_lorimer_



Owen Metzger (Dr. Field) is happy to return to *Ten Days in a Madhouse* after December's staged reading. He previously appeared in MTM's readings of *Dumb Luck* and *The Puppet* in 2017. Other recent performance credits include *La Traviata* (Madison Opera), *Parade* (Middleton Players Theatre), and *Titanic* (Oregon Straw Hat Players).



Anna Pfefferkorn (Nellie Bly) rings in her second show with Music Theatre of Madison! Anna made her MTM debut as Korin in *Held: A Musical Fantasy*. She earned her BFA in musical theatre from UW-Milwaukee. Anna has performed with such companies as Skylight Music Theatre, Children's Theatre of Madison, Four Seasons, Capital City, and Middleton Players. Favorite credits include Fantine in *Les Misérables*, Nancy in *Oliver!*, and Carrie in *Carrie: The Musical*. See more at annapfefferkorn.com.



Matt Ragalie (George) was most recently involved in MTM's staged reading of *Ten Days in a Madhouse* and is honored to continue this new work with such talented people! Recent acting credits include Britt Craig in *Parade* (Middleton Players Theatre), Tunny in *Green Day's American Idiot* (Express Yourself Madison), Michael in *Tick, tick Boom!* (Lake Country Playhouse), and Claude in *Hair* (Lakeside Players). Matt would like to thank his wife, friends, and family for their continual support.



Elena España Regan (Mrs. Ramirez) is overjoyed to be participating in her very first MTM production. This is her first foray into musical theatre since moving to Madison in 2015 for graduate school, and can't believe her luck in working alongside such a talented group. Playing a Spanish-speaking character that connects her to her roots is a very special treat! Previous roles in Madison include Eliza in Krass's *Shiny Things*, Eunice in BST's *The Widemaker*, and various roles in short play festivals (*Queer Shorts*, *Mythical Creatures*).



Toya Robinson (Mrs. Freeman) appeared in MTM's first two productions in 2006: *Hair* and *Violet*. She also sang as part of the large cast of *Elegies for Angels, Punks, and Raging Queens*. A theatre veteran, Toya has been performing in the Madison area for over 20 years. She sends love to her amazing kids and fiance.



Kailea Saplan (Mrs. Caine/Pauline) is a third generation Filipina-American actor, originally from the Big Island of Hawai'i. After earning bachelor's degrees in Theatre and Philosophy at Pacific University, she moved to Madison to pursue graduate studies in education at UW-Madison. Kailea is a teaching artist for Children's Theatre of Madison, Madison Public Library, and Whoopensocker. You may also recognize her as Hawai'i KO, her Madison Roller Derby alter ego. Recent credits include: Ophelia in *Hamlet* (Madison Shakespeare Company); Mrs. Ramirez in *Ten Days In A Madhouse* (staged reading by Music Theatre of Madison); Benvolia in *Romeo and Juliet* (Theatre Lila); Olivia in *Twelfth Night* (University Theatre - UW Madison); Princess in *Love's Labor's Lost* (Portland Actors Ensemble); Malcolm in *Macbeth* (Original Practice Shakespeare Festival); and Romeo in *Romeo and Juliet* (Pacific University).



Netalee Sheinman (Nurse McCarten) grew up in Tel Aviv, Israel and has been in Madison for almost 10 years. She has worked with MTM in past productions including; *Elegies for Angels Punks and Raging Queens* (still one of her favorites), *Miscast* and *Nine*. Netalee spends most of her time working in the lively Madison restaurant community. In the remainder, she loves performing with various Madison theatre companies and working with Whoopensocker; a creative writing, and performance outreach program at elementary schools in Madison. Netalee is grateful to be part of this new musical that was created by the beautiful collaboration between Karen Saari and Jennifer Hedstrom. Thank you to Karen, Jennifer, Meghan, Kristen, Adam and Scott for all the patience and creativity to create safely.

Creative Team Bios

Meghan Randolph (Director/Producer) is Music Theatre of Madison's Founder and Executive Director, where she has overseen production on over 35 mainstage shows and numerous concerts, readings, and, prior to 2018, outreach events. She also founded and oversees the New Musicals Cycle, of which *Ten Days in a Madhouse* is a part. Recent MTM directing credits include *Indecent*, *Hephaestus*, *Murder Ballad*, *Little Miss Sunshine*, *A New Brain*, *Nine*, *Bonnie & Clyde*, *Bloody Bloody Andrew Jackson*, and numerous others since MTM's inception in 2006. Meghan is also the Artistic Director of the Voices Theatre Project, which recently presented a live virtual reading of *The Pussy Grabber Plays* from twenty different locations. The project raised \$2000 for Madison's Rape Crisis Center. The company also raised \$1500 for the Wisconsin Innocence Project in 2017 with its production of *The Exonerated*. Also a performer, Meghan was recently seen as Miss Trunchbull in *Matilda* with CTM, Mrs. Lovett in *Sweeney Todd* with Middleton Players, Charlene in *Zombies from the Beyond* with Skylight Music Theatre, Lizzie in *Lizzie* with MTM, Aldonza in *Man of La Mancha* with Four Seasons, a disgruntled statistician in Forward Theater's *Two Steps Forward* monologue festival, and many more. In another life she tap-danced her way across North America as Jennyanydots and the Grizabella understudy on the National Tour of *Cats*. She trained at the Interlochen Arts Camp and Academy, holds a BFA in musical theatre from the University of Michigan, and earned an MS in Arts Administration from Drexel University. Meghan is a published writer on marketing lesser-known works of theatre and has spoken twice at the National Arts Marketing Conference through Americans for the Arts. Many thanks to all who have been part of this complicated but exciting endeavor. We will keep art alive no matter what it takes!



Jennifer Hedstrom (Music and co-lyrics) is an MTM Artistic Associate. She has music directed and played for MTM's *Murder Ballad*, *Lizzie*, *La Cage Aux Folles*, and *A New Brain*. She has also worked locally with Forward Theater Company (*Mr. Burns*) and Children's Theater of Madison. A versatile musician with two degrees worth of formal studies, Jennifer has made a career in Madison as a singer-songwriter, composer, pianist, piano teacher, and music director. As a songwriter, Jennifer has self-released two full-length albums and has served as a teaching and performing artist for Girl's Rock Camp, the Overture Center's Lullaby Project, and Whoopensocker. Learn more and hear her other music at jenniferhedstrom.com.

Karen Saari (Book and co-lyrics) is a nationally produced and award-winning playwright based in Madison, WI. As a performer, Karen has appeared in MTM's *Sound of Music* and *Bonnie and Clyde*. In addition to *Ten Days in a Madhouse*, her full-length plays include *In a Clearing* (World Premiere 2018; 2018 O'Neill Conference semi-finalist; 2017 ATHE Award finalist; 2017 Last Frontier Theatre Conference PlayLab; 2015 Wisconsin Wrights winner), *Bad in Bed (A Fairy Tale)* (Developmental Premiere 2018; Calicchio Emerging American Playwrights Prize semi-finalist; Garry Marshall New Works semi-finalist) and *'Rain on Fire* (2020 Talk Back Theatre Playwriting Prize; 2019 Br!nk Residency Award). Her short plays *Joyland*, *The Ones Who Stay* and *A Robot, a Clown and a Turban* have been produced from Newport, WA to Buffalo, NY. She was a 2020 finalist for Playwrights Center's prestigious Core Apprentice program. She belongs to Dramatists Guild, Playwrights Center, and is earning her MFA in playwriting at Augsburg University.



Nellie's story appears in New York World

Kristen Emery (Production Manager/MTM Company Manager) manages all contracts and company business as well as serves as stage manager on select MTM shows. For MTM, she has stage managed *Indecent*, *Ten Days in a Madhouse (reading)*, *Hephaestus*, *Little Miss Sunshine*, *Hephaestus (Workshop)*, *Lizzie*, *Striking 12*, and *A New Brain*. Before moving to Madison, she worked as a general manager for Cardinal Stage Company in Bloomington, IN, where she also stage managed their mainstage season. Kristen has also worked for Fresco Opera Theatre, Children's Theater of Madison, and SPCT in Madison, Legacy Theatre and the Long Wharf Theatre in Connecticut, and the Abingdon Theatre Company and OnTheSquareProductions in New York. Kristen leads her school's drama club program at Bird Elementary School in Sun Prairie, where she also teaches math in Grades K-5.

Erin Baal (Set Designer/Renderings) has been working in Madison theatre since 1999. Her most recent scenic designs appeared in *The Curious Incident of the Dog in the Night-Time* (Strollers Theatre), *The Serpent's Tooth* (Are We Delicious?), and *The Lion, The Witch, and the Wardrobe* (Madison College). Erin's previously worked with MTM as the scenic artist for *Hephaestus*, though her husband, Mac, has played in the pit for many previous productions, so she has been an enthusiastic member of the MTM audience for some time!

Shannon Heibler (Costume Designer/Renderings) is delighted to be working with MTM again (previously having been the scenic charge for *La Cage* and *You're the Flop*)! Shannon is a Madison based costume designer with design credits at Forward Theater Company (*Heisenberg*, *I & You*), Children's Theater of Madison (*Matilda*, *Tuck Everlasting*), University Theatre (*Evil Dead the Musical*, *Julius Caesar*), and more! Additionally she works as the assistant costume shop manager for UW-Madison's Theatre & Drama program. This is a tough time for artists, so as you are able and you find yourself enjoying art to take your mind off the world, consider a charitable donation to a friendly local arts non-profit (like MTM!) that they might continue to support the work of artists long after this year is over. Thanks to Meghan, love to Ben.

Adam Qutaishat (Sound and Podcast Engineer/Voice of Joseph Pulitzer) is excited to be back with MTM after appearing in last season's productions of *Indecent* and *Held*. Adam is an actor, director, designer, teacher, writer, composer, and advocate working throughout the Midwest. Area highlights include work with Next Act Theatre, Skylight Music Theatre, Milwaukee Opera Theatre, Milwaukee Chamber Theatre, Renaissance Theaterworks, and The National Theatre for Children. Adam also writes, produces, and directs radio play podcast, *The All-Arcadians* and serves as an Artistic Associate for Music Theatre of Madison and All In Productions. adamqutaishat.com



Joseph Pulitzer

Scott Glogovsky (Sound and Podcast Engineer) has worked as a sound designer for MTM for many years. Recent designs include *Little Miss Sunshine*, *Lizzie*, *A New Brain*, *Bonnie & Clyde*, and more. He has worked in a variety of technical theatre positions throughout the country at companies including American Players Theatre, The Voices Theatre, The World's Stage, and QuantUM.

Evan Lange (Assistant Music Director) is a music director, keyboard programmer, composer, and pianist in the Madison Area. Recent MD credits include *The Little Mermaid* (SPHS), *Carrie* (CCT), *The Last Five Years* (SPTG), *Hedwig And The Angry Inch* (MPC), *On the Town* (Asst. MD, CCT), *Parade* (Asst. MD, MPT), *All Shook Up* (MPT), and *Cabaret* (Out!Cast/StageQ).

Maureen Janson (Assistant Director) is very pleased to return to MTM, where she previously contributed to *Murder Ballad*. Locally, Maureen has often worked with Forward Theater Company, American Players Theatre, Madison Opera, Kanopy Dance, Four Seasons Theatre and UW-Madison Theatre Department, and regionally with Great River Shakespeare Festival, Remy Bumppo, The Hypocrites, Artistic Home and Griffin among others. She is a freelance photographer, an Advisory Company member of Forward Theater and a writer. Her theatre/fiction writing debut, *Beautiful View*, a collection of monologues, premiered in Madison in 2019. Details about all of her work can be found at maureenjanson.com. For Dad.

Trinity Gardner (Directing and Development Intern) has worked on MTM's productions of *Hephaestus* (directing intern for both the 2018 workshop and 2019 full production), *Indecent* (costume intern), and *Parade* (Children's ensemble). She has also appeared in numerous productions around the Madison area. She is excited to be part of this project and sends love to her awesome family.

Nellie Bly Resources

[Nellie's writings \(Historic Journalism\)](#)

[Nellie Bly \(National Women's History Museum\)](#)

[...Now Nellie Bly is getting her due \(Washington Post\)](#)

[Undercover in an insane asylum \(short animated film by The Atlantic\)](#)

[Blackwell's Island \(National Park Service\)](#)

[What Nellie Bly Exposed At Blackwell's...\(Medium's Legendary Women\)](#)



MUSIC THEATRE OF MADISON

DISCOVER WHAT'S NEXT.

About Music Theatre of Madison

Music Theatre of Madison (MTM) is a professional theatre company focused on the new and different in musical theatre. In our fourteen years, we've produced dozens of local, state, and regional premieres of unknown gems, running the gamut from a one-woman musical presented in a coffeeshop to a Festival of New Musicals to full-scale productions at various Madison locations. We've also conducted free and low-cost performances through partnerships with Madison schools, community organizations, libraries, and senior centers, and many educational ties through the University of Wisconsin-Madison.

We envision a world that perceives the broad and important role of musical theatre to engage, entertain, educate, and challenge audiences. That world is filled with people who acknowledge that many of the best years of this young art form are still ahead of us; that new pieces hold equal weight to old ones, and that daring and unusual stories told from varied perspectives make us better artists and people. It is also a world in which musical theatre tells the stories of *everyone* in our society, and provides equality in hiring and expression opportunities amongst people of all backgrounds. We strive to make that world a reality by continually embracing new pieces with provocative subject matter, innovative structure, and emotional impact that reach the broadest possible audiences. We also remain conscious of new voices and ideas within the art form, and work hard to cultivate an interest in those voices at the local level amongst a broad spectrum of our community. Finally, we use a mix of trained professionals and natural talents from our own neighborhoods to bring these productions to Madison stages with care and skill, keeping our experiences as affordable and accessible as we can.

Music Theatre of Madison staff

Executive Director/Founder: Meghan Randolph

Company Manager: Kristen Emery

Outreach Director: Kelsey Anne Johnson

Technical Director: Andrew Lonsdale

New Works Director: Nathan Fosbinder

Producing Associate: Alexis O'Connell

Artistic Associates: Janine Gardner, Liz Griffith, Jennifer Hedstrom, Adam Qutaishat, J. Adam Shelton, Mark Wurzelbacher

Board of Directors

Scott Glogovsky, President

Nick Barsuli, Treasurer

Paige Hutchison-Fecteau

Patrick Randolph

Matt White

Music Theatre of Madison's generous donors from August 2019–August 2020

The work we do would not be possible without the support of the following individuals, grantors, and businesses. In this scary time, we're committed to continue making art in whatever way we can. If you are willing and able to make a contribution of any size, you can do so at www.mtmadison.com/support. We are very grateful for all who contribute. Every dollar counts!

Our podcast sponsors:



Door Creek Orchard

Puppet
Laurieate
LLC



TDS Custom
CONSTRUCTION INC



Producer (\$5000–\$10000+)

Anonymous

Stephen Barr

Dane Arts

Frank Young Fund for New Musicals/
National Alliance for Musical Theatre

Laurie & Karl Everitt

Wisconsin Humanities Council

Wisconsin Union Theater

Director (\$1,000–\$4999)

Anonymous

Ted & Sue Barr

Beyond The Page Foundation

Steve and Paige Fecteau

Scott Glogovsky

Madison Arts Commission

Meghan Randolph

New Harvest Foundation

Vogel Bros.

Wisconsin Arts Board

Leading Player (\$500–\$999)

Ken & Carolyn Brown

John Heizelman

Orange Tree Imports

Mike & Kristin Randolph

Roost Realty

Roberta Riportella

Bob & Joanne Skloot

TDS Custom Construction

Jan Levine Thal

Matt White

Ensemble (\$100-\$499)

Anonymous Foundation (2)
 Anonymous (4)
 George Bacon
 David Barr (In Memory)
 Nick Barsuli
 Becky Blakeslee
 Stuart Brooks
 Steve and Rhonda Brown
 Todd and Cyndi Brown
 Anthony Cary
 Jo Chalhoub
 James Cook
 Door Creek Orchard
 Elizabeth Everitt
 Joe and Holly Glogovsky
 Marc and Judith Herstand
 Micah and Vidya Cowsik-Herstand
 Art and Lisa Hains
 Jeffrey Henriques
 The Johnson Family
 James Kreuger
 Steve & Kelly Lagman
 Deborah Lamm & John Wolman
 Sean Langenecker
 Jim Mallman
 Hayley Mason
 Maxwell
 Kristen Morgan
 Julia Nicholas
 Kathie Nichols
 Patrick Randolph & Allie Heizelman
 Doug Reed
 Joshua Schiffman
 James Schrader
 Nicole Weiss

Crew (Up to \$99)

Anonymous (3)
 James Aehl
 Ann Albert
 Aaron Bahr
 Ryan Banar
 Maurice Barr
 Emily Battles
 Ryan Beatty
 Jason Beaubien
 Katie Behr
 Kevin and Sarah Blakeslee
 Michael Bruno
 Nina Cheney
 Jim Chiolino
 Michael Dhar
 Kelley and Tom Engle
 Hannah Ripp-Dieter
 John Feith
 Michele Greenberg
 Bobby Goderich
 Jeri & Tom Grogg
 Chan Hamric
 Miranda Hawk
 Keith Hayward
 Patricia Gullo Hetland
 Chris Holoyda
 Stephanie Hurda
 Kim Huff
 Jaclyn June Johnson
 Adam Levi
 Owen Metzger
 Emily Mills
 Andrew Miller-Rhoads
 Karen Moeller
 Kristen Morgan
 Frances Murcott
 Christian Neuhaus
 Katy O'Leary

Judith Parkes
 David Pausch
 Sara Peruo
 Kristy Phipps
 Chris & Ginny Powers
 Kristin Randolph
 Thomas Ratkowski
 Russell Reed
 Hannah Ripp-Dieter
 Karen Saari
 Matthew Schrader
 Cynthia Seay
 Lynda Sharpe
 Netalee Sheinman
 David Simmons
 John Smigleski
 Mark Snowden
 Richard Stauffacher
 Louise Stout
 Bart Terrell
 Sarah Whelan
 Sharon White
 Johanna Jackson
 Whitman
 Christina Martin-Wright
In-kind
 Arts for All
 Banzo
 Nick Barsuli
 Kristen and Matt Emery
 Electronic Theatre Controls
 Lisa Erdman
 Laurie Everitt
 Gina Gomez
 Jennifer Hedstrom
 High End Systems
 Lakeview Moravian

Evan Lange
 Andrew Lonsdale
 Kelly Maxwell
 Middleton High School
 Newcomb Construction
 Q Music
 Quarles & Brady
 Patrick Randolph
 James Schrader
 St. Luke's Church
 Threshold
 Sharon White
 Wisconsin Union Theater
 Mark Wurzelbacher
 XTension Dance Company