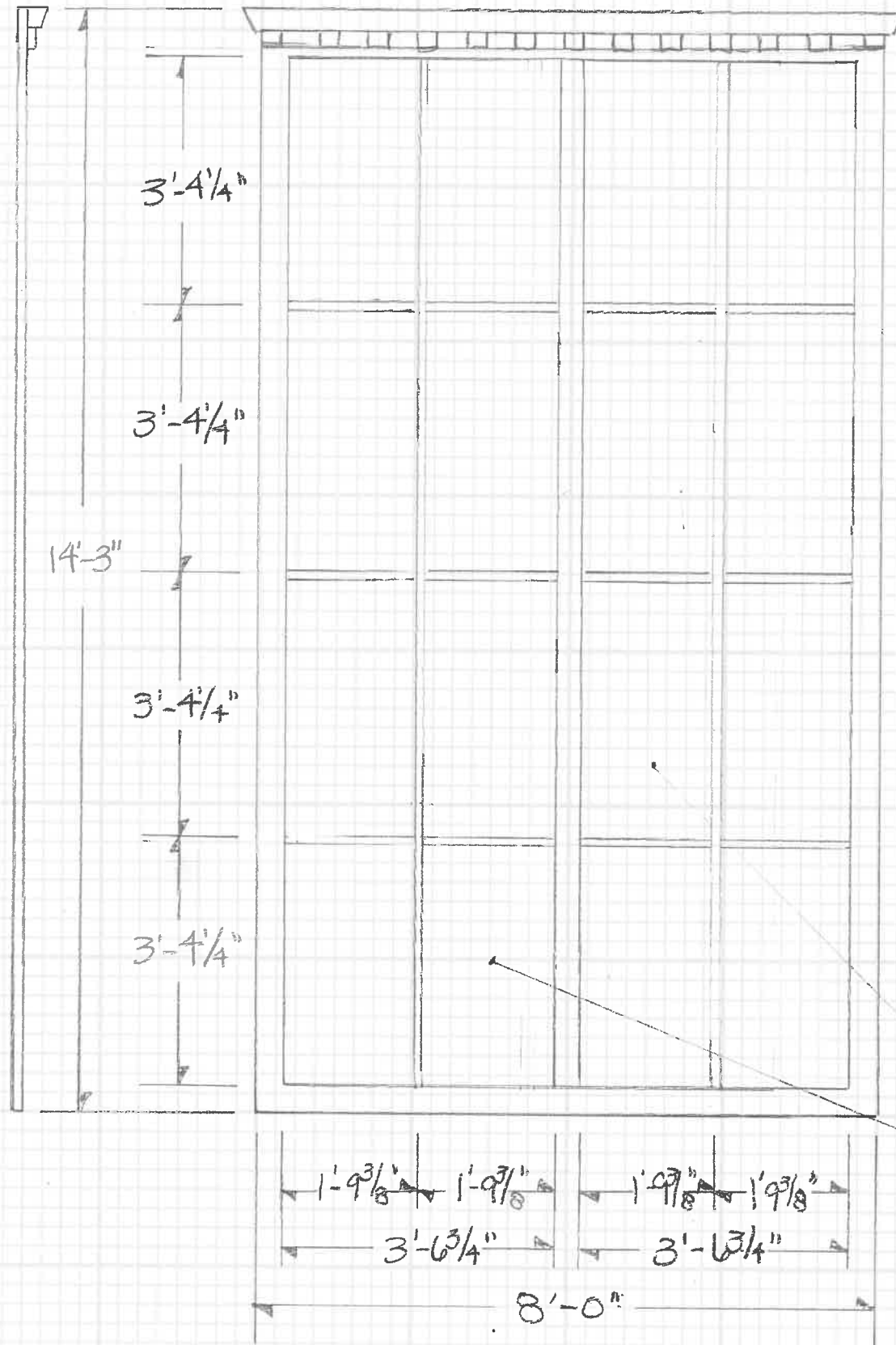
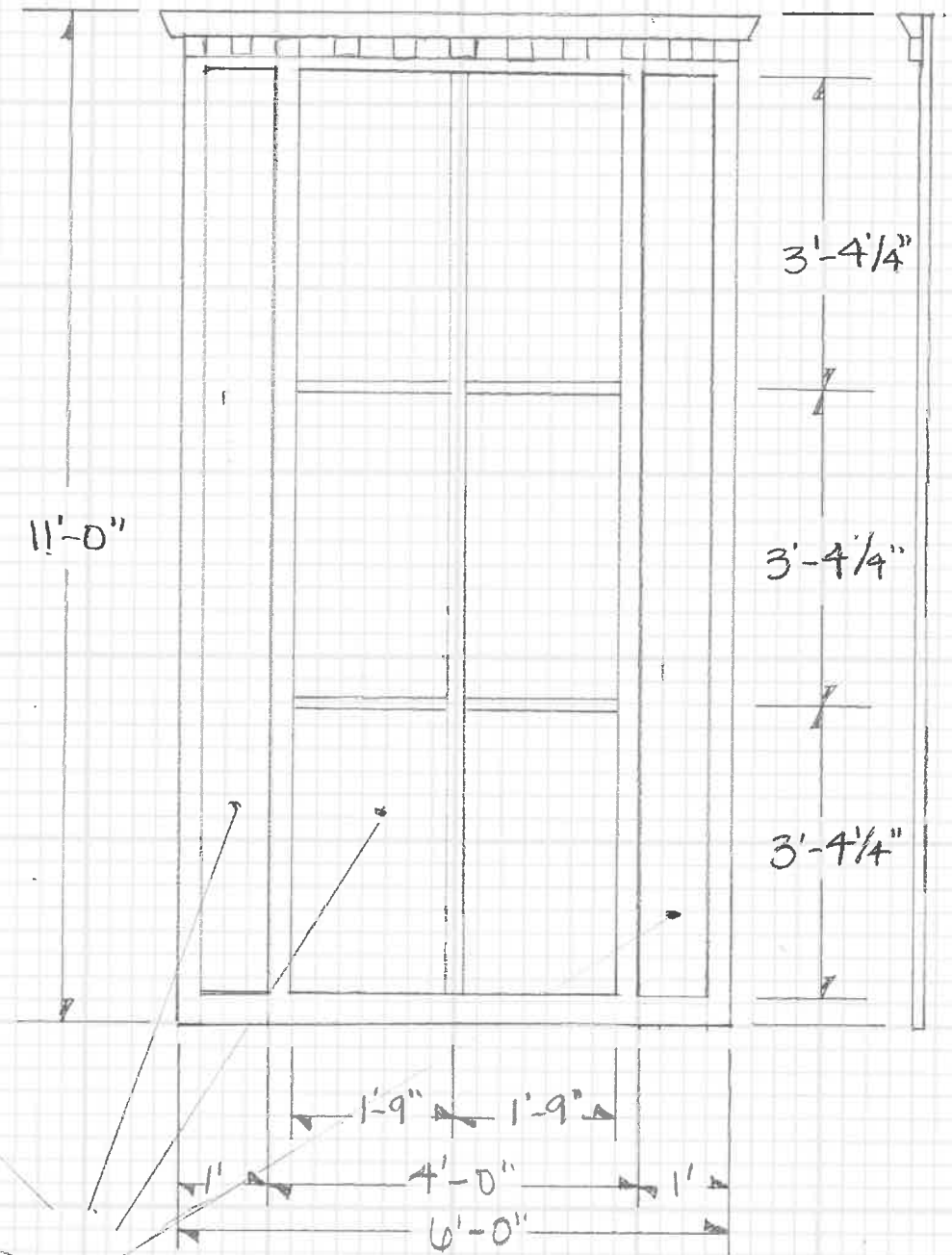


"TEN DAYS IN A MADHOUSE"
 MUSIC THEATRE OF MADISON
 PLAY CIRCLE
 GROUND PLAN
 SCALE: 1/4" = 1'-0"
 DES: ERIN S BAAL
 8.4.20 PLATE: 1 of 4

UC WINDOW



SL & SR WINDOWS

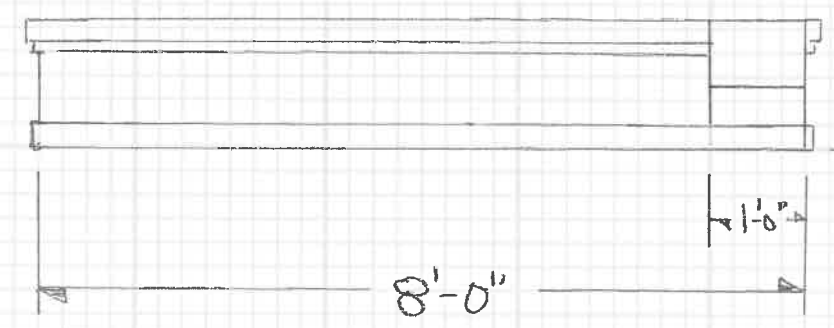
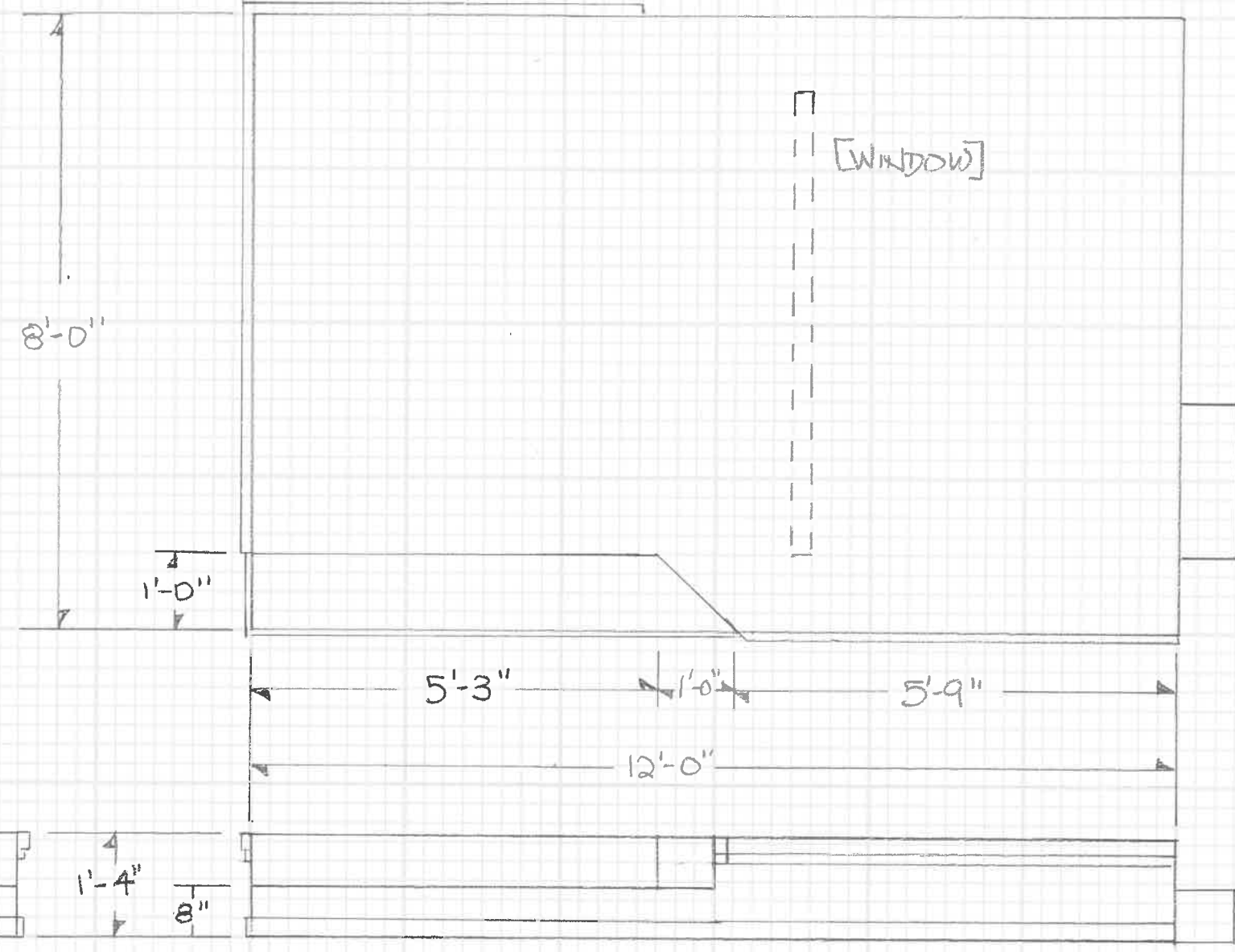


[FABRIC]

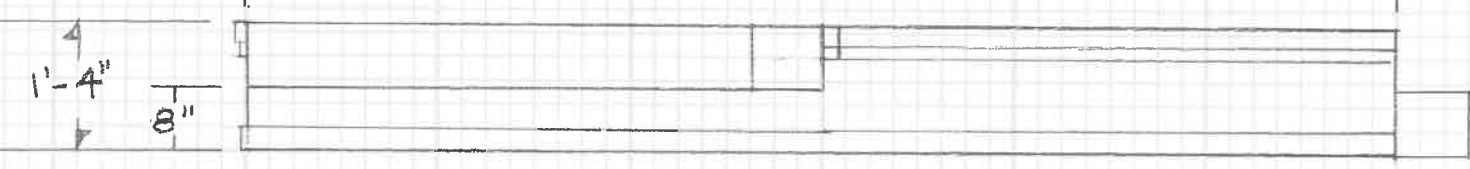
"TEN DAYS IN A MADHOUSE"
 MUSIC THEATRE OF MADISON
 PLAY CIRCLE
 DETAIL: WINDOWS
 SCALE: 1/2" = 1'-0"
 DES: ERIN S BAXL
 8.4.20 PLATE: 2 of 4

[TOP]

- DECK - 2 - 4x8, 1 - 3x8 PLATFORMS
BUILD ANGLE & STEP
- LUXAN FACING - PLASTER & PAINT
TO BE ADDED
- TRIM TO TOP EDGE & FLOOR EDGE
- ESCAPE STEP NOT VISIBLE TO
AUDIENCE

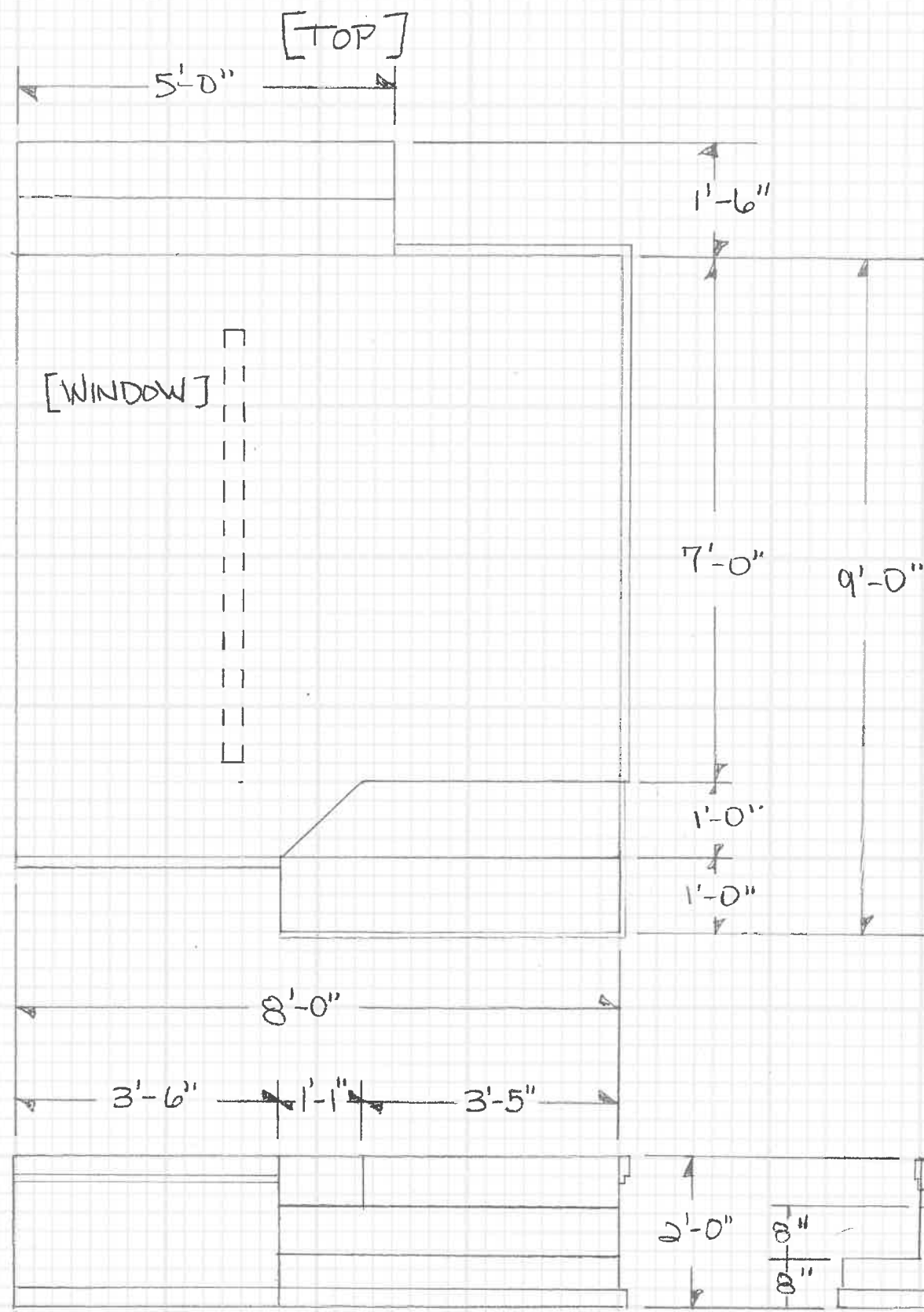


[DOWN STAGE FACE]



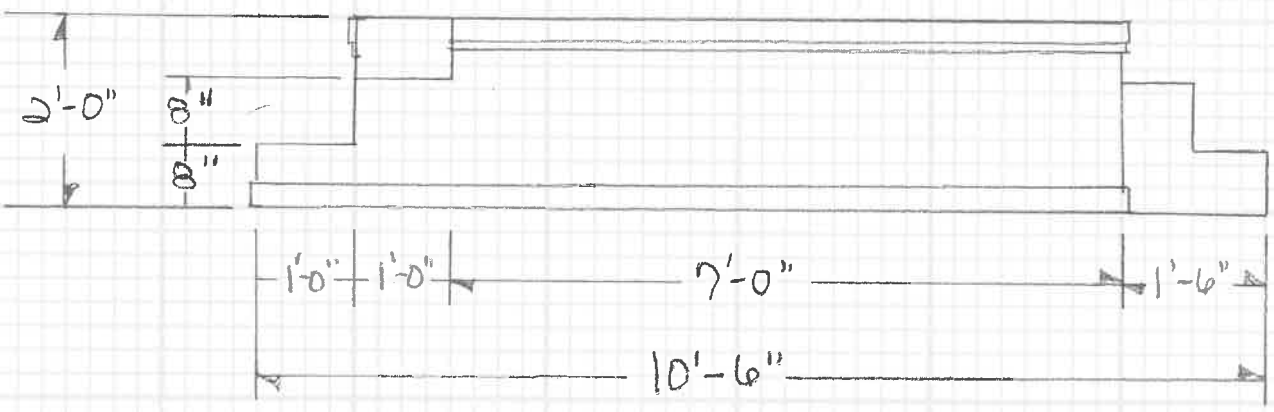
[ON STAGE FACE]

"TEN DAYS IN A MADHOUSE"
 MUSIC THEATRE OF MADISON
 PLAY CIRCLE
 DETAIL: SR PLATFORM
 SCALE: 1/2" = 1'-0"
 DES: ERIN S BAXL
 8.4.20 PLATE: 3 OF 4



- DECK - 1-4x8, 1-3x8 PLATFORM
BUILD RINGLE & STEPS
- LUXIAN FACING - PLASTER & PAINT
TO BE ADDED
- TRIM TOP EDGE & FLOOR EDGE
- ESCAPE STAIR NOT VISIBLE TO
AUDIENCE

[ON STAGE FACE]



[DOWN STAGE FACE]

"TEN DAYS IN A MADHOUSE"
MUSIC THEATRE OF MADISON
PLAY CIRCLE
DETAIL: SL PLATFORM
SCALE: 1/2" = 1'-0"
DES: ERIN S BAAL
8.4.20 PLATE: 4 of 4